

Boardwalk

Halstock Avenue

FISHPONDS, BRISTOL

Halstock Avenue FISHPONDS

APPROXIMATE FLOOR AREA
89.8 SQM / 966 SQFT



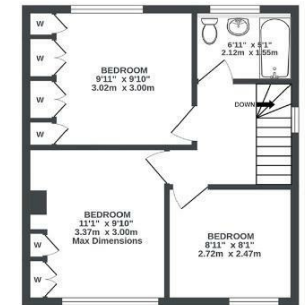
GARDEN STUDIO & STORAGE
(NOT IN SITU)
0 sq. ft. (0.0 sq. m.) approx.
(NOT INC IN TOTAL SQ.M)



GROUND FLOOR
576 sq. ft. (53.5 sq. m.) approx.



1ST FLOOR
391 sq. ft. (36.3 sq. m.) approx.



Illustrations are for reference purposes only, measurements are approximate, not to scale.



Boardwalk

Halstock Avenue

FISHPONDS, BRISTOL



£435,000



3 Bedrooms



BS16 3ER



2 Bathrooms



"Our garden gets sun basically all day, it pours into the house first thing & in the summer it remains at the end of the garden until early evening, which is a great way to end the day. Being so close to the cycle path is amazing, a vein that runs through so many parts of the city, into the centre making the place very connected. Plenty of parks nearby has been great for young kids, snuff mills is a short walk away, it's easy to forget you're in the city sometimes."

